

Long Tones

Trombone

Concert F Descending

1

Exercise 1 consists of two staves of music in bass clef with a common time signature. The first staff contains measures 1 through 7, and the second staff contains measures 8 through 14. The notes are: 1 (F), 2 (E), 3 (D), 4 (C), 5 (B), 6 (A), 7 (G), 8 (F), 9 (E), 10 (D), 11 (C), 12 (B), 13 (A), 14 (G).

2

Exercise 2 consists of one staff of music in bass clef with a common time signature. It contains measures 1 through 4. The notes are: 1 (F), 2 (E), 3 (D), 4 (C).

Long Tone 1

1a

Exercise 1a consists of two staves of music in bass clef with a common time signature. The first staff contains measures 1 through 7, and the second staff contains measures 8 through 14. The notes are: 1 (F), 2 (E), 3 (D), 4 (C), 5 (B), 6 (A), 7 (G), 8 (F), 9 (E), 10 (D), 11 (C), 12 (B), 13 (A), 14 (G).

1b

Exercise 1b consists of two staves of music in bass clef with a common time signature. The first staff contains measures 1 through 7, and the second staff contains measures 8 through 14. The notes are: 1 (F), 2 (E), 3 (D), 4 (C), 5 (B), 6 (A), 7 (G), 8 (F), 9 (E), 10 (D), 11 (C), 12 (B), 13 (A), 14 (G).

1c

Exercise 1c consists of two staves of music in bass clef with a common time signature. The first staff contains measures 1 through 5, and the second staff contains measures 6 through 10. The notes are: 1 (F), 2 (E), 3 (D), 4 (C), 5 (B), 6 (A), 7 (G), 8 (F), 9 (E), 10 (D).

1d

Exercise 1d consists of two staves of music in bass clef with a common time signature. The first staff contains measures 1 through 6, and the second staff contains measures 7 through 12. The notes are: 1 (F), 2 (E), 3 (D), 4 (C), 5 (B), 6 (A), 7 (G), 8 (F), 9 (E), 10 (D), 11 (C), 12 (B).

Warm-Up Set 1

Trombone

Options 1, 2, & 3

Musical notation for Options 1, 2, & 3, consisting of three staves of music in bass clef with a common time signature. The first staff contains measures 1 through 5, the second staff contains measures 6 through 10, and the third staff contains measures 11 through 14. The music features various rhythmic patterns and melodic lines, with some measures containing slurs and ties.

Option 4

Musical notation for Option 4, consisting of three staves of music in bass clef with a common time signature. The first staff contains measures 1 through 5, the second staff contains measures 6 through 10, and the third staff contains measures 11 through 14. The music features various rhythmic patterns and melodic lines, with some measures containing slurs and ties.

Option 5


Musical notation for Option 5, consisting of three staves of music in bass clef with a common time signature. The first staff contains measures 1 through 5, the second staff contains measures 6 through 10, and the third staff contains measures 11 through 14. The music features various rhythmic patterns and melodic lines, with some measures containing slurs and ties.

Flow Studies

Trombone


Vincent Cichowicz

1




1

2




2

3




3

4



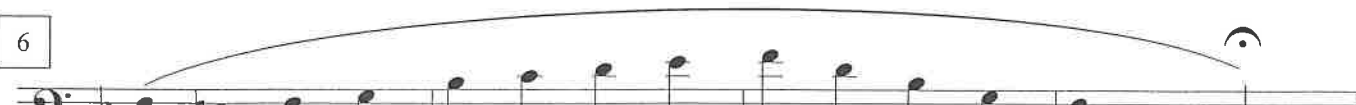
4

5



5

6



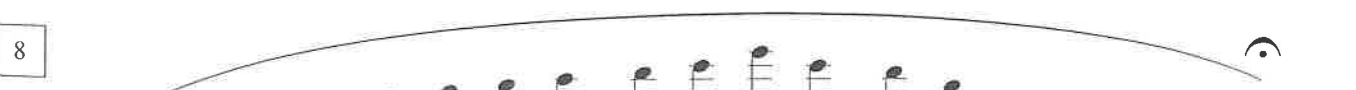
6

7



7

8



8

Keller Central Band: Articulation

Basic - Front-Middle-End



Tenuto



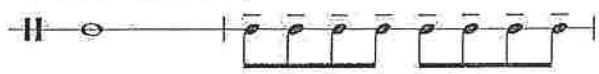
Long Lift



Staccato



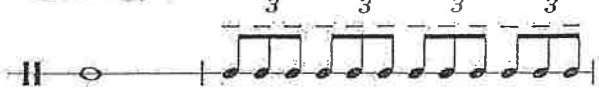
8th Note - Tenuto



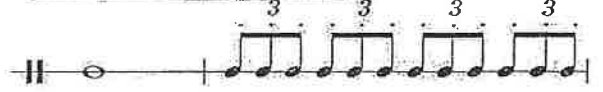
8th Note - Staccato



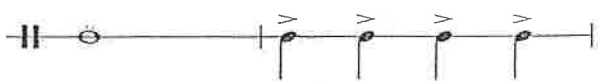
Triplet 8th Note - Tenuto



Triplet 8th Note - Staccato



Accented Notes



Marcato Notes "March Style"



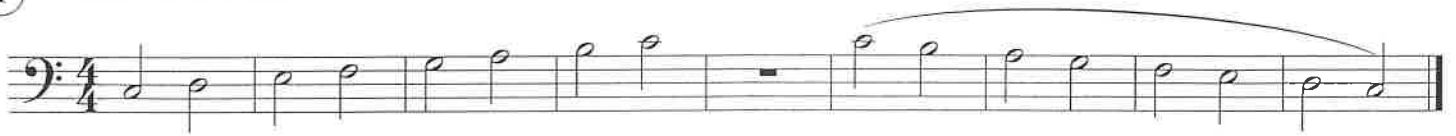
16th Note Series - Single Tongue Control



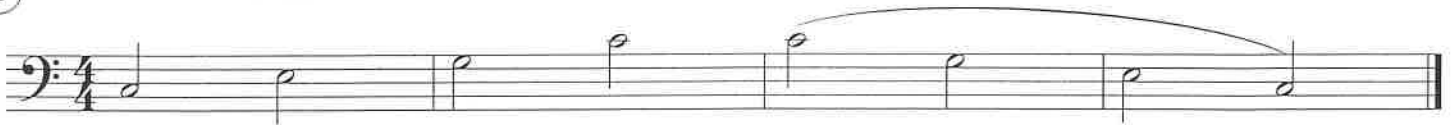
Key Studies

C Major

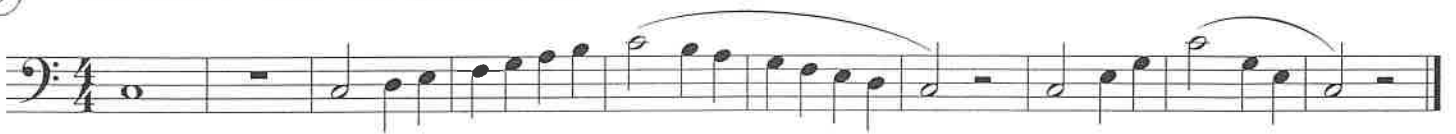
① Half Note Scale



② Half Note Arpeggio



③ One Octave - Half Note/Quarter Note



④ One Octave - Quarter/Eighth



⑤ Clarke Study



⑥ Scale in Thirds



⑦ Second/Third Octaves



⑧ Full Range - Quarter/Eighth



2
9 Full Range - Arpeggio



10 Full Range - Eighth/Sixteenth



11 Inverted Scale



12 Broken Arpeggio



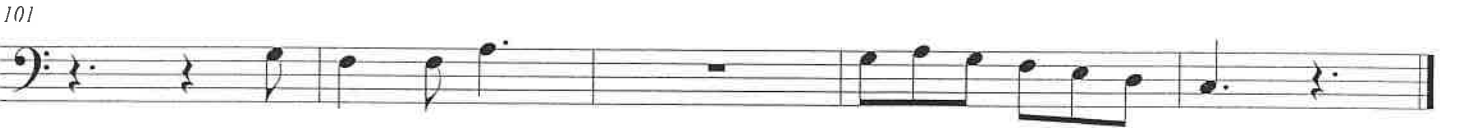
13 London Bridge



14 Simple Gifts



15 Hickory Dickory Dock



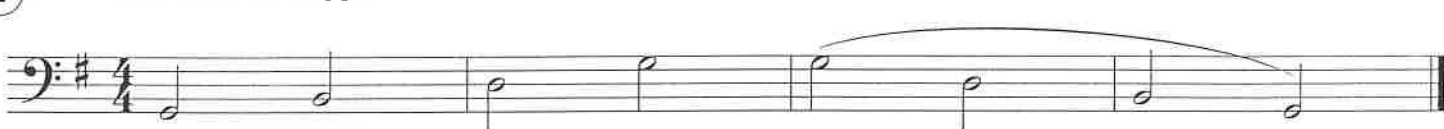
Key Studies

G Major

① Half Note Scale



② Half Note Arpeggio



③ One Octave - Half Note/Quarter Note



④ One Octave - Quarter/Eighth



⑤ Clarke Study



⑥ Scale in Thirds



⑦ Second/Third Octaves



⑧ Full Range - Quarter/Eighth



9 Full Range - Arpeggio

10 Full Range - Eighth/Sixteenth

11 Inverted Scale

12 Broken Arpeggio

13 London Bridge

14 Simple Gifts

15 Hickory Dickory Dock

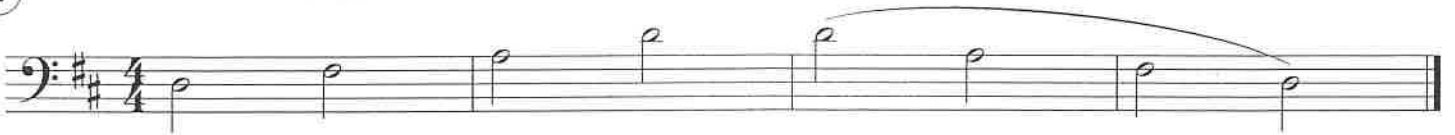
Key Studies

D Major

① Half Note Scale



② Half Note Arpeggio



③ One Octave - Half Note/Quarter Note



④ One Octave - Quarter/Eighth



⑤ Clarke Study



⑥ Scale in Thirds



⑦ Second/Third Octaves



⑧ Full Range - Quarter/Eighth



2
9

Full Range - Arpeggio

10

Full Range - Eighth/Sixteenth

Inverted Scale

11

12

Broken Arpeggio

13

London Bridge

14

Simple Gifts

92

15

Hickory Dickory Dock

101

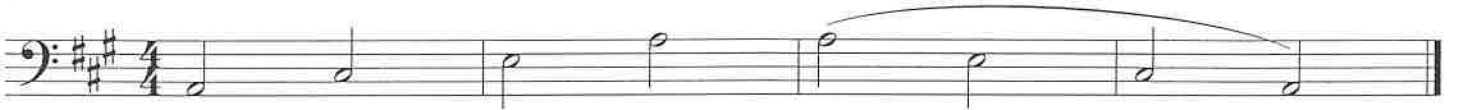
Key Studies

A Major

① Half Note Scale



② Half Note Arpeggio



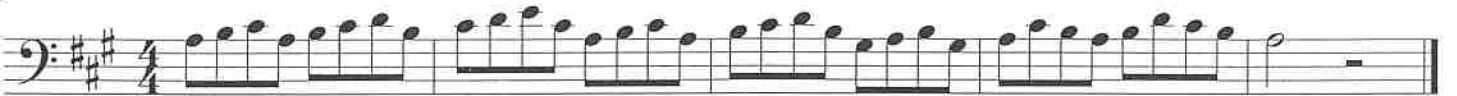
③ One Octave - Half Note/Quarter Note



④ One Octave - Quarter/Eighth



⑤ Clarke Study



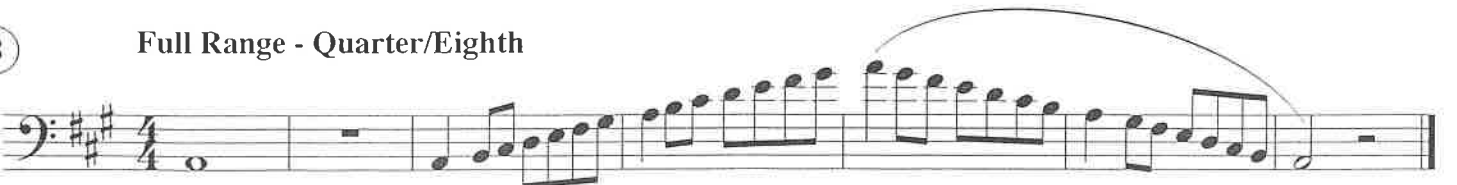
⑥ Scale in Thirds



⑦ Second/Third Octaves



⑧ Full Range - Quarter/Eighth



9

Full Range - Arpeggio

10

Full Range - Eighth/Sixteenth

11

Inverted Scale

12

Broken Arpeggio

13

London Bridge

14

Simple Gifts

15

Hickory Dickory Dock

Key Studies

E Major

① Half Note Scale



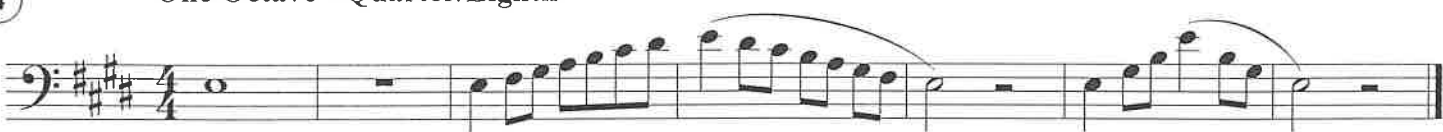
② Half Note Arpeggio



③ One Octave - Half Note/Quarter Note



④ One Octave - Quarter/Eighth



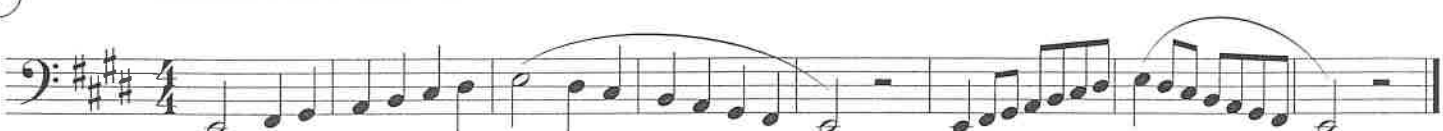
⑤ Clarke Study



⑥ Scale in Thirds



⑦ Second/Third Octaves

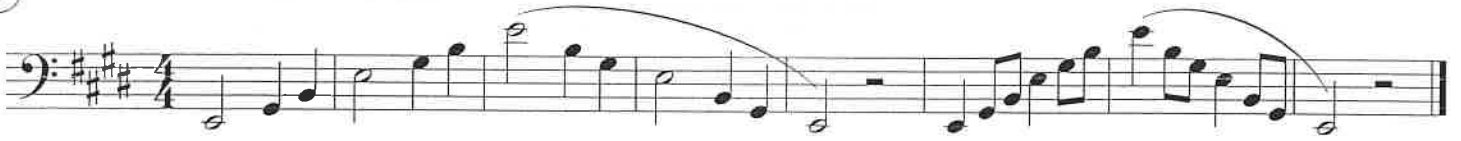


⑧ Full Range - Quarter/Eighth



2
9

Full Range - Arpeggio



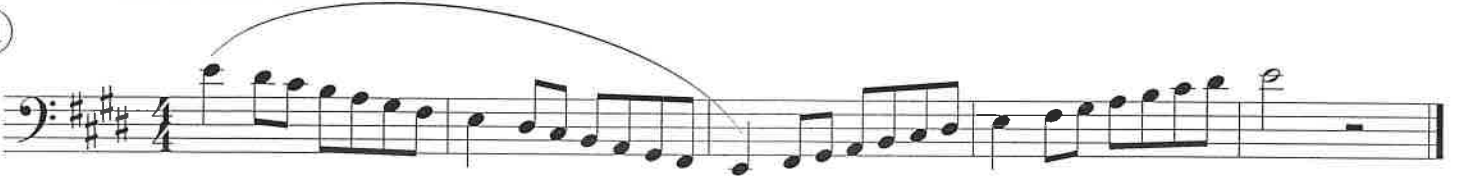
10

Full Range - Eighth/Sixteenth



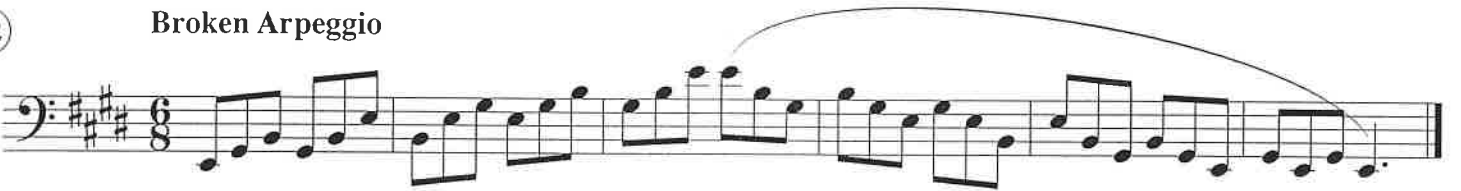
Inverted Scale

11



12

Broken Arpeggio



13

London Bridge

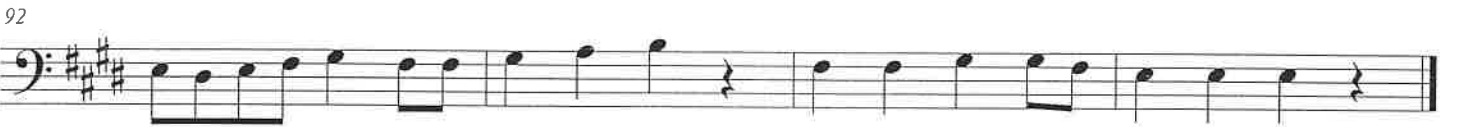


14

Simple Gifts



92

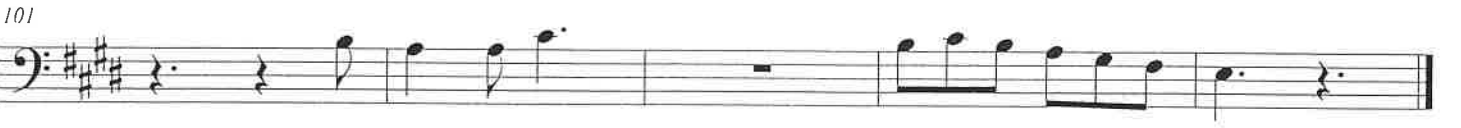


15

Hickory Dickory Dock



101



Key Studies

B Major

① Half Note Scale

② Half Note Arpeggio

③ One Octave - Half Note/Quarter Note

④ One Octave - Quarter/Eighth

⑤ Clarke Study

⑥ Scale in Thirds

⑦ Second/Third Octaves

⑧ Full Range - Quarter/Eighth



Key Studies

2
9

Full Range - Arpeggio

10

Full Range - Eighth/Sixteenth

11

Inverted Scale

12

Broken Arpeggio

13

London Bridge

14

Simple Gifts

92

15

Hickory Dickory Dock

101

Key Studies

Gb Major

① Half Note Scale



② Half Note Arpeggio



③ One Octave - Half Note/Quarter Note



④ One Octave - Quarter/Eighth



⑤ Clarke Study



⑥ Scale in Thirds



⑦ Second/Third Octaves



⑧ Full Range - Quarter/Eighth



2
9

Full Range - Arpeggio

10

Full Range - Eighth/Sixteenth

11

Inverted Scale

12

Broken Arpeggio

13

London Bridge

14

Simple Gifts

92

15

Hickory Dickory Dock

101

Key Studies

Db Major

1

Half Note Scale



2

Half Note Arpeggio



3

One Octave - Half Note/Quarter Note



4

One Octave - Quarter/Eighth



5

Clarke Study



6

Scale in Thirds



7

Second/Third Octaves



8

Full Range - Quarter/Eighth



9 Full Range - Arpeggio

10 Full Range - Eighth/Sixteenth

11 Inverted Scale

12 Broken Arpeggio

13 London Bridge

14 Simple Gifts

92

15 Hickory Dickory Dock

101

Key Studies

Ab Major

① Half Note Scale

Musical notation for exercise 1: Half Note Scale. Bass clef, 4/4 time, Ab major key signature. The scale is played in half notes, ascending and then descending, with a slur over the entire piece.

② Half Note Arpeggio

Musical notation for exercise 2: Half Note Arpeggio. Bass clef, 4/4 time, Ab major key signature. The exercise consists of half notes arpeggiated in ascending and descending order, with a slur over the entire piece.

③ One Octave - Half Note/Quarter Note

Musical notation for exercise 3: One Octave - Half Note/Quarter Note. Bass clef, 4/4 time, Ab major key signature. The exercise features a mix of half and quarter notes in ascending and descending patterns, with slurs over the ascending and descending phrases.

④ One Octave - Quarter/Eighth

Musical notation for exercise 4: One Octave - Quarter/Eighth. Bass clef, 4/4 time, Ab major key signature. The exercise features quarter and eighth notes in ascending and descending patterns, with slurs over the ascending and descending phrases.

⑤ Clarke Study

Musical notation for exercise 5: Clarke Study. Bass clef, 4/4 time, Ab major key signature. The exercise is a continuous eighth-note pattern, characteristic of the Clarke study.

⑥ Scale in Thirds

Musical notation for exercise 6: Scale in Thirds. Bass clef, 4/4 time, Ab major key signature. The exercise is a scale played in thirds, ascending and then descending, with a slur over the entire piece.

⑦ Second/Third Octaves

Musical notation for exercise 7: Second/Third Octaves. Bass clef, 4/4 time, Ab major key signature. The exercise features eighth-note patterns in the second and third octaves, ascending and then descending, with slurs over the ascending and descending phrases.

⑧ Full Range - Quarter/Eighth

Musical notation for exercise 8: Full Range - Quarter/Eighth. Bass clef, 4/4 time, Ab major key signature. The exercise features quarter and eighth notes across the full range of the instrument, ascending and then descending, with a slur over the ascending and descending phrases.



Key Studies

2
9

Full Range - Arpeggio

10

Full Range - Eighth/Sixteenth

11

Inverted Scale

12

Broken Arpeggio

13

London Bridge

14

Simple Gifts

92

15

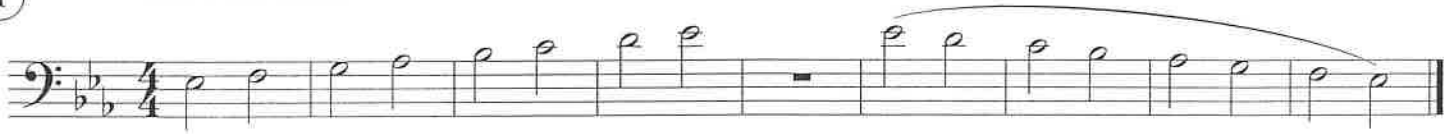
Hickory Dickory Dock

101

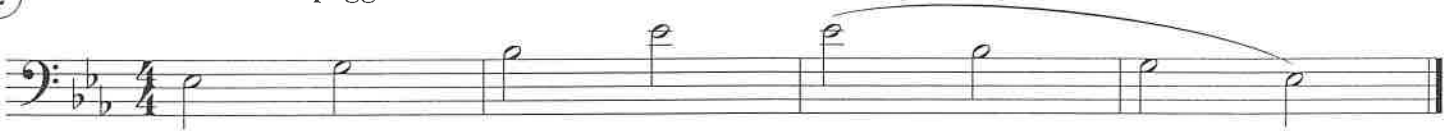
Key Studies

Eb Major

① Half Note Scale



② Half Note Arpeggio



③ One Octave - Half Note/Quarter Note



④ One Octave - Quarter/Eighth



⑤ Clarke Study



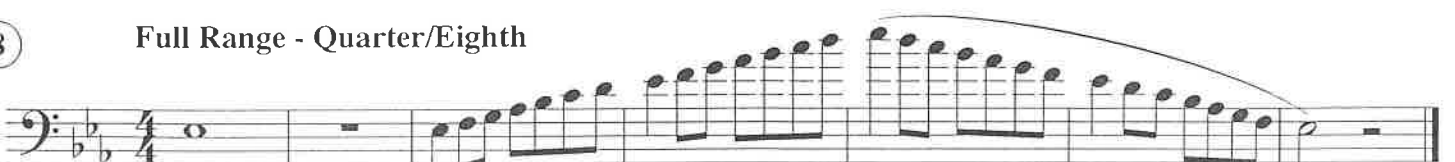
⑥ Scale in Thirds



⑦ Second/Third Octaves



⑧ Full Range - Quarter/Eighth



9 Full Range - Arpeggio

10 Full Range - Eighth/Sixteenth

11 Inverted Scale

12 Broken Arpeggio

13 London Bridge

14 Simple Gifts

15 Hickory Dickory Dock

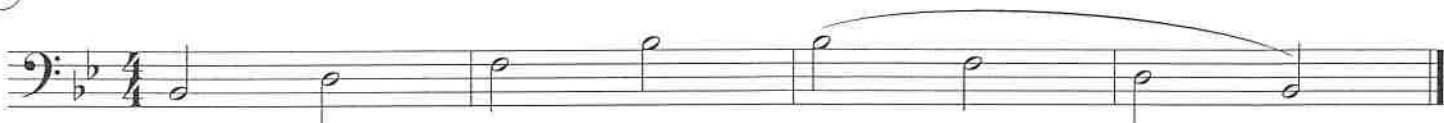
Key Studies

Bb Major

① Half Note Scale



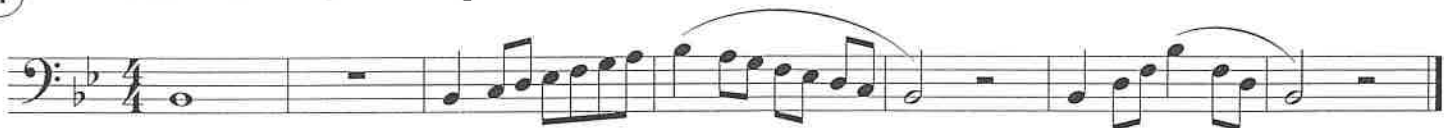
② Half Note Arpeggio



③ One Octave - Half Note/Quarter Note



④ One Octave - Quarter/Eighth



⑤ Clarke Study



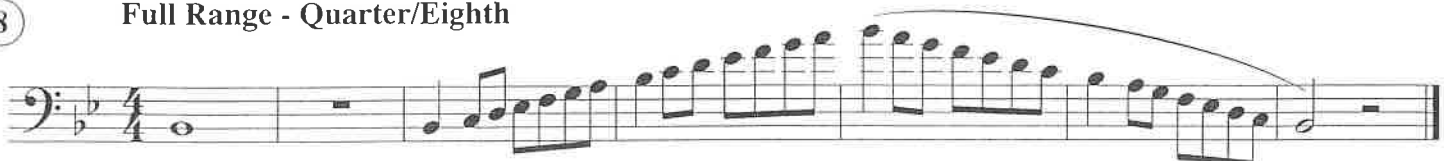
⑥ Scale in Thirds



⑦ Second/Third Octaves



⑧ Full Range - Quarter/Eighth



9 Full Range - Arpeggio

10 Full Range - Eighth/Sixteenth

11 Inverted Scale

12 Broken Arpeggio

13 London Bridge

14 Simple Gifts

92

15 Hickory Dickory Dock

101

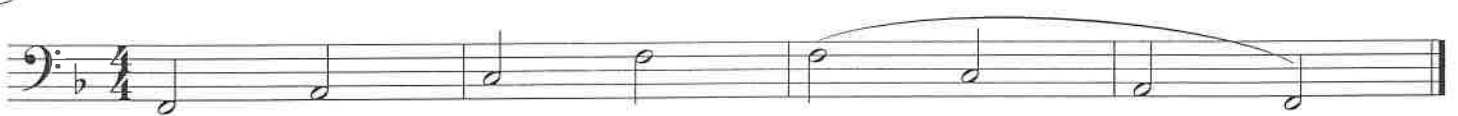
Key Studies

F Major

① Half Note Scale



② Half Note Arpeggio



③ One Octave - Half Note/Quarter Note



④ One Octave - Quarter/Eighth



⑤ Clarke Study



⑥ Scale in Thirds



⑦ Second/Third Octaves



⑧ Full Range - Quarter/Eighth



9 Full Range - Arpeggio

10 Full Range - Eighth/Sixteenth

11 Inverted Scale

12 Broken Arpeggio

13 London Bridge

14 Simple Gifts

15 Hickory Dickory Dock

KC Band: Major Scales



Tenor Trombone

C Major Scale

G Major Scale

D Major Scale

A Major Scale

E Major Scale

B Major Scale

F# Major Scale

KC Band: Major Scales

Tenor
4/4

F Major Scale

Musical notation for the F Major Scale in bass clef, 4/4 time. The scale is written across two staves. The first staff contains the first eight notes (F2, G2, A2, B2, C3, D3, E3, F3) and the second staff contains the remaining eight notes (G3, A3, B3, C4, D4, E4, F4, G4). A large slur covers the entire scale.

Bb Major Scale

Musical notation for the Bb Major Scale in bass clef, 4/4 time. The scale is written across two staves. The first staff contains the first eight notes (Bb2, C3, D3, Eb3, F3, G3, Ab3, Bb3) and the second staff contains the remaining eight notes (C4, D4, Eb4, F4, G4, Ab4, Bb4, C5). A large slur covers the entire scale.

Eb Major Scale

Musical notation for the Eb Major Scale in bass clef, 4/4 time. The scale is written across two staves. The first staff contains the first eight notes (Eb2, F2, G2, Ab2, Bb2, C3, Db3, Eb3) and the second staff contains the remaining eight notes (F3, G3, Ab3, Bb3, C4, Db4, Eb4, F4). A large slur covers the entire scale.

Ab Major Scale

Musical notation for the Ab Major Scale in bass clef, 4/4 time. The scale is written across two staves. The first staff contains the first eight notes (Ab2, Bb2, C3, Db3, Eb3, F3, Gb3, Ab3) and the second staff contains the remaining eight notes (Bb3, C4, Db4, Eb4, F4, Gb4, Ab4, Bb4). A large slur covers the entire scale.

Db Major Scale

Musical notation for the Db Major Scale in bass clef, 4/4 time. The scale is written across two staves. The first staff contains the first eight notes (Db2, Eb2, F2, Gb2, Ab2, Bb2, C3, Db3) and the second staff contains the remaining eight notes (Eb3, F3, Gb3, Ab3, Bb3, C4, Db4, Eb4). A large slur covers the entire scale.

Gb Major Scale

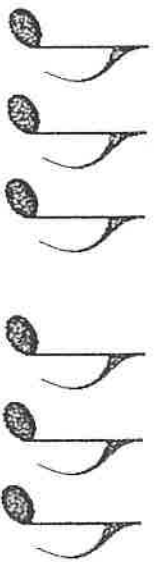
Musical notation for the Gb Major Scale in bass clef, 4/4 time. The scale is written across two staves. The first staff contains the first eight notes (Gb2, Ab2, Bb2, C3, Db3, Eb3, F3, Gb3) and the second staff contains the remaining eight notes (Ab3, Bb3, C4, Db4, Eb4, F4, Gb4, Ab4). A large slur covers the entire scale.



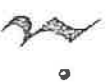
6/8 Time Signature

* SIX 8th NOTES FIT IN ONE MEASURE *

NOTES



RESTS



6/8 Counting

Mixed Triplet Rhythms

In 6/8 time, the dotted-quarter note gets the beat. There are only 2 beats per measure that are divided into triplets.

1 2 3 4

1 la li 2 la li

5 6 7 8

9 10 11 12

13 14 15 16

17 18 19 20

21 22 23 24

25 26 27 28

29 30 31 32

Trombone

Charger Fight Song

For Hillwood Middle School

Arr: Smith

f

8

16

Fight! Fight! CHS! Win! Win!

24

CHS!

32

40

SEVEN NATION ARMY

PART 4
Trombone/Baritone B.C./Bassoon

Words and Music by
JACK WHITE
Arranged by PAUL MURTHA

Rock

mf

9

8 *f* > *mf*

17

16

27

24 *fp* \longleftarrow *f*

37

32 *fp* \longleftarrow *f* *mf*

45

43 *f* *mf*

53

49

63

57 *fp* \longleftarrow *f*

66 *fp* \longleftarrow *f*

1/2

SEVEN NATION ARMY

PART 5
Trombone/Baritone B.C./Bassoon

Words and Music by
JACK WHITE
Arranged by PAUL MURTHA

Rock

mf

6

f *mf*

12

17

18

24

fp *f*

27

29

2/2

PART 5
Trombone/Baritone B.C./Bassoon

35 *fp* *mf* 37

40 *f* *mf* 45

46

52 53

58 *fp*

63 *f*

69 *fp* *f*

From STAR WARS: THE MANDALORIAN
THE MANDALORIAN

PART 4
Trombone/Baritone/Bassoon

Written by LUDWIG GÖRANSSON
Arranged by PAUL MURTHA

Driving

7 11 12 17 21 26 28 31 36 41 46

32 Majestically

Repeat & Fade 2

From STAR WARS: THE MANDALORIAN
THE MANDALORIAN

PART 5
Trombone/Baritone/Bassoon

Written by LUDWIG GÖRANSSON
Arranged by PAUL MURTHA

Driving

5

7

mf

11

17

16

3

f

21

mf

28

26

3

f

mf

32 Majestically

31

f

35

41

ff

mf

49

Repeat & Fade

2

THE AVENGERS

PART 4
Trombone/Baritone/Bassoon

Composed by ALAN SILVESTRI
Arranged by ROBERT LONGFIELD

Deliberately

mf

6 9 f

11

16 17 f

22 25 mf f

28 mf f

34 35

40 43 mp f

46 ff sffz p ff

