

Tuba

Long Tones

Concert F Descending

1

Two staves of musical notation for exercise 1. The first staff contains measures 1 through 7, and the second staff contains measures 8 through 14. The notes are: 1 (F), 2 (E), 3 (D), 4 (C), 5 (B), 6 (A), 7 (G), 8 (F), 9 (E), 10 (D), 11 (C), 12 (B), 13 (A), 14 (G).

2

One staff of musical notation for exercise 2, containing measures 1 through 4. The notes are: 1 (F), 2 (E), 3 (D), 4 (C).

Long Tone 1

1a

Two staves of musical notation for exercise 1a. The first staff contains measures 1 through 7, and the second staff contains measures 8 through 14. The notes are: 1 (F), 2 (E), 3 (D), 4 (C), 5 (B), 6 (A), 7 (G), 8 (F), 9 (E), 10 (D), 11 (C), 12 (B), 13 (A), 14 (G).

1b

Two staves of musical notation for exercise 1b. The first staff contains measures 1 through 7, and the second staff contains measures 8 through 14. The notes are: 1 (F), 2 (E), 3 (D), 4 (C), 5 (B), 6 (A), 7 (G), 8 (F), 9 (E), 10 (D), 11 (C), 12 (B), 13 (A), 14 (G).

1c

Two staves of musical notation for exercise 1c. The first staff contains measures 1 through 5, and the second staff contains measures 6 through 10. The notes are: 1 (F), 2 (E), 3 (D), 4 (C), 5 (B), 6 (A), 7 (G), 8 (F), 9 (E), 10 (D).

1d

Two staves of musical notation for exercise 1d. The first staff contains measures 1 through 6, and the second staff contains measures 7 through 12. The notes are: 1 (F), 2 (E), 3 (D), 4 (C), 5 (B), 6 (A), 7 (G), 8 (F), 9 (E), 10 (D), 11 (C), 12 (B).

Warm Up Set 1

Options 1, 2, & 3

7

13

15 Option 4

20

25

29 Option 5

34

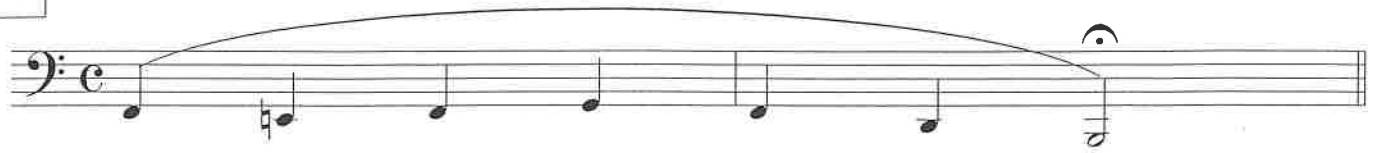
39

Flow Studies

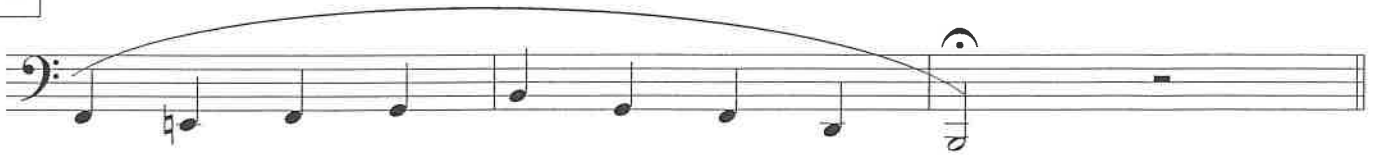
Tuba

Vincent Cichowicz

1



2



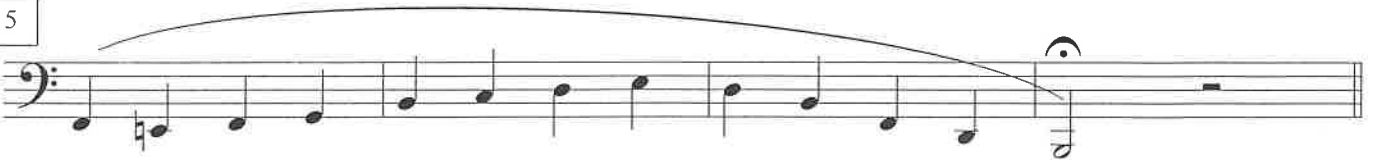
3



4



5



6



7

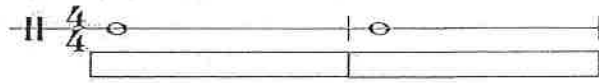


8



Keller Central Band: Articulation

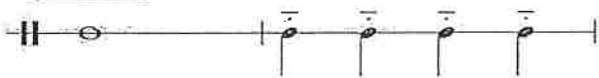
Basic - Front-Middle-End



Tenuto



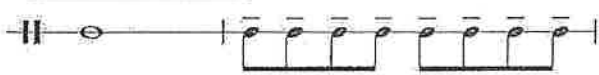
Long Lift



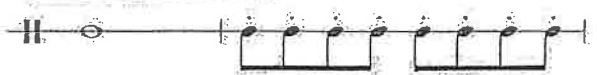
Staccato



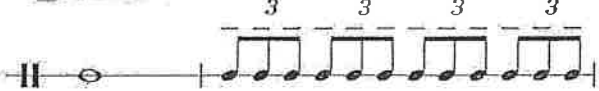
8th Note - Tenuto



8th Note - Staccato



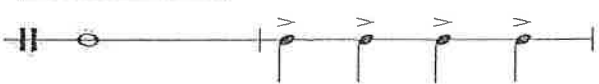
Triplet 8th Note - Tenuto



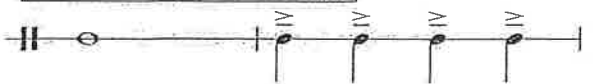
Triplet 8th Note - Staccato



Accented Notes



Marcato Notes "March Style"



16th Note Series - Single Tongue Control



Key Studies

C Major

① Half Note Scale

② Half Note Arpeggio

③ One Octave - Half Note/Quarter Note

④ One Octave - Quarter/Eighth

⑤ Clarke Study

⑥ Scale in Thirds

⑦ Second/Third Octaves

⑧ Full Range - Quarter/Eighth



9 Full Range - Arpeggio

10 Full Range - Eighth/Sixteenth

11 Inverted Scale

12 Broken Arpeggio

13 London Bridge

14 Simple Gifts

15 Hickory Dickory Dock

Key Studies

G Major

① Half Note Scale

② Half Note Arpeggio

③ One Octave - Half Note/Quarter Note

④ One Octave - Quarter/Eighth

⑤ Clarke Study

⑥ Scale in Thirds

⑦ Second/Third Octaves

⑧ Full Range - Quarter/Eighth



2

9 Full Range - Arpeggio

10 Full Range - Eighth/Sixteenth

11 Inverted Scale

12 Broken Arpeggio

13 London Bridge

14 Simple Gifts

92

15 Hickory Dickory Dock

101

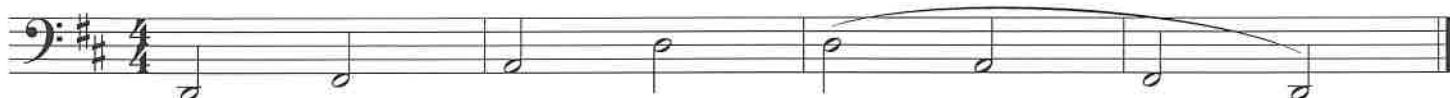
Key Studies

D Major

① Half Note Scale



② Half Note Arpeggio



③ One Octave - Half Note/Quarter Note



④ One Octave - Quarter/Eighth



⑤ Clarke Study



⑥ Scale in Thirds



⑦ Second/Third Octaves



⑧ Full Range - Quarter/Eighth



9

Full Range - Arpeggio

10

Full Range - Eighth/Sixteenth

11

Inverted Scale

12

Broken Arpeggio

13

London Bridge

14

Simple Gifts

15

Hickory Dickory Dock

Key Studies

A Major

① Half Note Scale

② Half Note Arpeggio

③ One Octave - Half Note/Quarter Note

④ One Octave - Quarter/Eighth

⑤ Clarke Study

⑥ Scale in Thirds

⑦ Second/Third Octaves

⑧ Full Range - Quarter/Eighth



2

9 Full Range - Arpeggio

10 Full Range - Eighth/Sixteenth

11 Inverted Scale

12 Broken Arpeggio

13 London Bridge

14 Simple Gifts

92

15 Hickory Dickory Dock

101

Key Studies

E Major

① Half Note Scale

② Half Note Arpeggio

③ One Octave - Half Note/Quarter Note

④ One Octave - Quarter/Eighth

⑤ Clarke Study

⑥ Scale in Thirds

⑦ Second/Third Octaves

⑧ Full Range - Quarter/Eighth



9

Full Range - Arpeggio

10

Full Range - Eighth/Sixteenth

11

Inverted Scale

12

Broken Arpeggio

13

London Bridge

14

Simple Gifts

92

15

Hickory Dickory Dock

101

Key Studies

B Major

① Half Note Scale



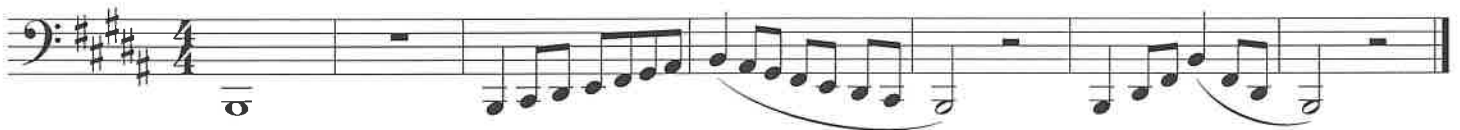
② Half Note Arpeggio



③ One Octave - Half Note/Quarter Note



④ One Octave - Quarter/Eighth



⑤ Clarke Study



⑥ Scale in Thirds



⑦ Second/Third Octaves



⑧ Full Range - Quarter/Eighth



9

Full Range - Arpeggio

10

Full Range - Eighth/Sixteenth

11

Inverted Scale

12

Broken Arpeggio

13

London Bridge

14

Simple Gifts

15

Hickory Dickory Dock

Tuba

Key Studies

Gb Major

① Half Note Scale

② Half Note Arpeggio

③ One Octave - Half Note/Quarter Note

④ One Octave - Quarter/Eighth

⑤ Clarke Study

⑥ Scale in Thirds

⑦ Second/Third Octaves

⑧ Full Range - Quarter/Eighth



2

9

Full Range - Arpeggio

10

Full Range - Eighth/Sixteenth

11

Inverted Scale

12

Broken Arpeggio

13

London Bridge

14

Simple Gifts

92

15

Hickory Dickory Dock

101

Key Studies

Db Major

① Half Note Scale

② Half Note Arpeggio

③ One Octave - Half Note/Quarter Note

④ One Octave - Quarter/Eighth

⑤ Clarke Study

⑥ Scale in Thirds

⑦ Second/Third Octaves

⑧ Full Range - Quarter/Eighth



9

Full Range - Arpeggio

10

Full Range - Eighth/Sixteenth

11

Inverted Scale

12

Broken Arpeggio

13

London Bridge

14

Simple Gifts

15

Hickory Dickory Dock

Tuba

Key Studies

Ab Major

① **Half Note Scale**



② **Half Note Arpeggio**



③ **One Octave - Half Note/Quarter Note**



④ **One Octave - Quarter/Eighth**



⑤ **Clarke Study**



⑥ **Scale in Thirds**



⑦ **Second/Third Octaves**



⑧ **Full Range - Quarter/Eighth**



2

9

Full Range - Arpeggio

10

Full Range - Eighth/Sixteenth

11

Inverted Scale

12

Broken Arpeggio

13

London Bridge

14

Simple Gifts

92

15

Hickory Dickory Dock

101

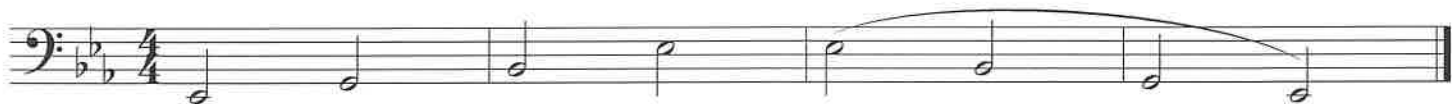
Key Studies

Eb Major

① Half Note Scale



② Half Note Arpeggio



③ One Octave - Half Note/Quarter Note



④ One Octave - Quarter/Eighth



⑤ Clarke Study



⑥ Scale in Thirds



⑦ Second/Third Octaves



⑧ Full Range - Quarter/Eighth



2
9

Full Range - Arpeggio

10

Full Range - Eighth/Sixteenth

11

Inverted Scale

12

Broken Arpeggio

13

London Bridge

14

Simple Gifts

92

15

Hickory Dickory Dock

101

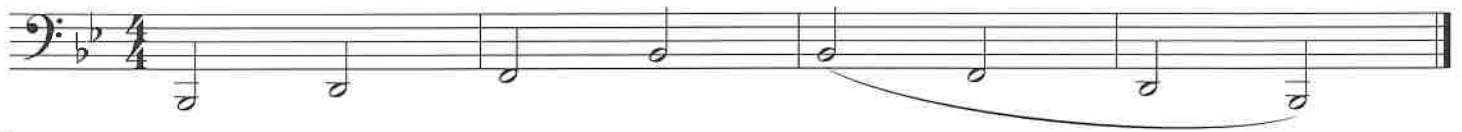
Key Studies

Bb Major

① Half Note Scale



② Half Note Arpeggio



③ One Octave - Half Note/Quarter Note



④ One Octave - Quarter/Eighth



⑤ Clarke Study



⑥ Scale in Thirds



⑦ Second/Third Octaves



⑧ Full Range - Quarter/Eighth



9

Full Range - Arpeggio

10

Full Range - Eighth/Sixteenth

11

Inverted Scale

12

Broken Arpeggio

13

London Bridge

14

Simple Gifts

15

Hickory Dickory Dock

Key Studies

F Major

① Half Note Scale

② Half Note Arpeggio

③ One Octave - Half Note/Quarter Note

④ One Octave - Quarter/Eighth

⑤ Clarke Study

⑥ Scale in Thirds

⑦ Second/Third Octaves

⑧ Full Range - Quarter/Eighth



9

Full Range - Arpeggio

10

Full Range - Eighth/Sixteenth

11

Inverted Scale

12

Broken Arpeggio

13

London Bridge

14

Simple Gifts

15

Hickory Dickory Dock

KC Band: Major Scales

Tuba



C Major Scale

G Major Scale

D Major Scale

A Major Scale

E Major Scale

B Major Scale

F# Major Scale

Tub
2

KC Band: Major Scales

F Major Scale

Musical notation for the F Major Scale, written on a single staff. The scale is shown in two parts: an ascending line and a descending line. The notes are F, G, A, Bb, C, D, E, F. The descending line includes a natural B. The scale is circled in black.

Bb Major Scale

Musical notation for the Bb Major Scale, written on a single staff. The scale is shown in two parts: an ascending line and a descending line. The notes are Bb, C, D, Eb, F, G, A, Bb. The descending line includes a natural B. The scale is circled in black.

Eb Major Scale

Musical notation for the Eb Major Scale, written on a single staff. The scale is shown in two parts: an ascending line and a descending line. The notes are Eb, F, G, Ab, Bb, C, D, Eb. The descending line includes a natural B. The scale is circled in black.

Ab Major Scale

Musical notation for the Ab Major Scale, written on a single staff. The scale is shown in two parts: an ascending line and a descending line. The notes are Ab, Bb, C, D, Eb, F, G, Ab. The descending line includes a natural B. The scale is circled in black.

Db Major Scale

Musical notation for the Db Major Scale, written on a single staff. The scale is shown in two parts: an ascending line and a descending line. The notes are Db, Eb, F, G, Ab, Bb, C, Db. The descending line includes a natural B. The scale is circled in black.

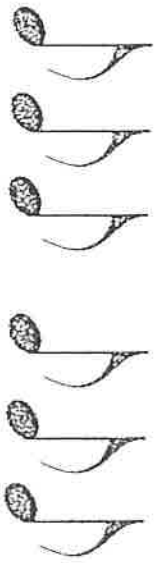
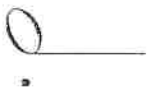
Gb Major Scale

Musical notation for the Gb Major Scale, written on a single staff. The scale is shown in two parts: an ascending line and a descending line. The notes are Gb, Ab, Bb, C, D, Eb, F, Gb. The descending line includes a natural B. The scale is circled in black.

6/8 Time Signature

* SIX 8th NOTES FIT IN ONE MEASURE *

NOTES



RESTS



6/8 Counting

Mixed Triplet Rhythms

In 6/8 time, the dotted-quarter note gets the beat. There are only 2 beats per measure that are divided into triplets.

1 la li 2 la li 3 4

5 6 7 8

9 10 11 12

13 14 15 16

17 18 19 20

21 22 23 24

25 26 27 28

29 30 31 32

Tuba

Charger Fight Song

For Hillwood Middle School

Arr: Smith

1
f

8

15
f Fight! Fight!

22
CHS! Win! Win! CHS!
f

26

33
f

40
f

SEVEN NATION ARMY

1/2

PART 5
Tuba

Words and Music by
JACK WHITE
Arranged by PAUL MURTHA

Rock

6 9 12 17 18 24 27 29

mf *f* *mf* *fp* *f*

PART 5
Tuba

2/2

35

37

fp *mf*

40

45

f *mf*

46

3

52

53

3

58

fp

63

f

69

fp *f*

From STAR WARS: THE MANDALORIAN
THE MANDALORIAN

PART 5
Tuba

Written by LUDWIG GÖRANSSON
Arranged by PAUL MURTHA

Driving

5 7

11

17

16

21

28

26

32 **Majestically**

31

35

41

49

46

mf

f

mf

ff *mf*

mf

Repeat & Fade
2

THE AVENGERS

Composed by ALAN SILVESTRI
Arranged by ROBERT LONGFIELD

PART 4
Tuba

Deliberately

mf

9

6

f

11

17

16

f

25

22

mf

f

28

mf

f

35

34

43

40

mp

f

46

ff

sffz

p

ff

